



19eA is probably one of the most advanced & powerful LED display weighing indicators at the similar price level.

It is designed and programmed to provide fast, easy and straightforward operation to meet an extraordinary wide range of applications like general static & dynamic industrial weighing, piece counting, shipping control, truck & tank weighing, pre-packing, manual sorting & packing, scientific & peak measuring & monitoring... etc. no matter as a standalone unit or incorporated in an integrated weighing system.



Configurable optical key gives easier and more efficiency access to the mostly used key and at the same time to prolong life span of the convention keyboard. It can be configured as Manual [Print/M+], Manual [Zero], Manual [Tare] or even disabled.

Tri-color Check Result Light Bar with 8 LED per check status presents pin-point accuracy about where and how far the current weight is and how far it is away from target value.

Thanks to the built-in 32-bit micro-processor, unsurpassed innovative program, new linearity compensation method, wide range of flexible, selectable operation parameters and selectable AD conversion speed, **19eA** always deliver unexceptional fast, accurate and stable results from low to high resolution, simple to complicated applications even at extremely heavy workload.

Functions

- Static, Dynamic & Animal Weighing, Piece Counting and Peak Hold
- Support Single Range, Dual Range and Dual Interval Operation
- Support both Tension and Compression Load / Force Direction
- Near Zero Weight Value for Dynamic Weighing to avoid False Signal Output
- Add-Tare-Memory (ATM) & Remove-Tare-Memory (RTM) Function
- Manual, Preset, Auto, Repetitive and Continuous Tare Operation
- Continuous Tare with Configurable Delay Time before Tare Action
- Weight and Quantity Check Mode
- Quick Access PLUs for Weight Limits, Quantity Limits and Preset Tare Values
- Direct PLUs for Customer & Product Codes
- Check Result Control for Accumulation, Data Printout & Data Output
- Keypad Lock Function
- Automatic Statistic and Standard Deviation Calculation & Printout for up to 300 Transactions
- Configurable Optical Key

Versatility, Functionality and Accuracy are always Built-in

19eA Multi-Function Indicator

Operation and Management Features

- Full Numeric Keypad
- Configurable Machine ID, Machine Group and Operator Number to Enhance Ease of Multi-Scales Applications and Management Records
- Customer & Product Code Input through Serial Scanner or Keypad
- Customer & Product Code Support Numbers, Alphabets and Selected Symbols
- Support External [Zero], [Tare] and [Print/M+] Key Input through Scanner
- Configurable Tri-Color Check Result Light Bar
- Configurable Keypad, Check & System Buzzer
- 2 x Independently Configurable Bi-Direction Serial Comports.
- Support Inquiry, Setting and Execution Commands through PC
- All Current Operation Results Output in Data Base Format Increases Ease & Efficiency of Data Management, Processing & Analysis
- Label Printers Supported: -
 - Dategs = LP-50
 - TSC = TDP-225, TDP-247, TDP-345, TTP-225, TTP-247, TTP-345
 - Sbarco = all Models with Serial Port
- Selectable Portrait / Landscape Ticket Printout Format
- 6 x 25mm LED Numeric Digits
- Zero, Gross, Net, Weighing Range, Memory & Battery Level & Recharge Indicators
- Watchdog System to Prevent Damages caused by Load Cell Short-circuit.
- 70 Hours plus Battery Service Time
- Zero, Net, Weight Unit, Memory & Lo Battery Level & Recharge Status Indicators
- Real Time Clock

	Opr	Seq	Mode	Mac	MacGp	Date	Time	Name	Pcode	Gross	Tare	Net	Low	High	Result	Total.W	Unit				
Weighing	3333	1	0	8888	77	2016/10/6	11:17:08	VNFHRUDHFLQAUMCB	12345678901234567A	12.500	5.000	7.500	4.995	5.005	Abovelimit	7.50	kg				
Weighing	3333	2	0	8888	77	2016/10/6	11:17:14	VNFHRUDHFLQAUMCB	12345678901234567A	15.000	2.500	12.500	4.995	5.005	Abovelimit	20.00	kg				
Weighing	3333	3	0	8888	77	2016/10/6	11:17:22	VNFHRUDHFLQAUMCB	12345678901234567A	15.000	5.000	10.000	4.995	5.005	Abovelimit	30.00	kg				
Weighing	3333	4	0	8888	77	2016/10/6	11:17:29	VNFHRUDHFLQAUMCB	12345678901234567A	10.000	5.000	5.000	4.995	5.005	Accept	35.00	kg				
Weighing	3333	5	0	8888	77	2016/10/6	11:17:46	VNFHRUDHFLQAUMCB	12345678901234567A	7.500	2.500	5.000	9.995	10.005	Belowlimit	40.00	kg				
Weighing	3333	6	0	8888	77	2016/10/6	11:17:50	VNFHRUDHFLQAUMCB	12345678901234567A	5.000	2.500	2.500	9.995	10.005	Belowlimit	42.50	kg				
	Opr	Seq	Mode	Mac	MacGp	Date	Time	Name	Pcode	Gross	Tare	Net	Total.W	Unit	Count	Unit.W	Unit	Low	High	Result	Total.C
Piece Count	3333	1	1	8888	77	2016/10/6	11:18:18	VNFHRUDHFLQAUMCB	12345678901234567A	5.000	2.500	2.500	2.500	kg	19999	0.12499	g	19995	20005	Accept	19999
Piece Count	3333	2	1	8888	77	2016/10/6	11:18:25	VNFHRUDHFLQAUMCB	12345678901234567A	7.500	2.500	5.000	7.500	kg	40002	0.12499	g	19995	20005	Abovelimit	60001
Piece Count	3333	3	1	8888	77	2016/10/6	11:18:31	VNFHRUDHFLQAUMCB	12345678901234567A	7.500	5.000	2.500	10.000	kg	20003	0.12499	g	19995	20005	Accept	80004
Piece Count	3333	4	1	8888	77	2016/10/6	11:18:37	VNFHRUDHFLQAUMCB	12345678901234567A	7.500	5.000	2.500	12.500	kg	20003	0.12499	g	19995	20005	Accept	100007
Piece Count	3333	5	1	8888	77	2016/10/6	11:18:43	VNFHRUDHFLQAUMCB	12345678901234567A	5.000	2.500	2.500	15.000	kg	19999	0.12499	g	19995	20005	Accept	120006
Piece Count	3333	6	1	8888	77	2016/10/6	11:18:47	VNFHRUDHFLQAUMCB	12345678901234567A	7.500	2.500	5.000	20.000	kg	40002	0.12499	g	19995	20005	Abovelimit	160008

Database Output Content Illustration: - Weighing and Piece Count Mode

Time 14:03:25 Date 2017-02-27 Opr 1 Name ASDFGHJKLQWERTYUIO Pcode 123456789012345678 Net 15.000kg Tare 0.000kg Gross 15.000kg Total 15.000kg High 15.001kg Low 14.999kg Accept	Name ASDFGHJKLQWERTYUIO Pcode 123456789012345678 Opr 0123 Mac 6666 MacGp 22 Date 2017-02-27 Time 13:58:54 <table border="1"> <thead> <tr> <th>Seq</th> <th>Gross</th> <th>Net</th> </tr> </thead> <tbody> <tr><td>001</td><td>5.000</td><td>5.000 kg</td></tr> <tr><td>002</td><td>5.000</td><td>5.000 kg</td></tr> <tr><td>003</td><td>5.000</td><td>5.000 kg</td></tr> <tr><td>004</td><td>10.000</td><td>10.000 kg</td></tr> <tr><td>005</td><td>10.000</td><td>10.000 kg</td></tr> <tr><td>006</td><td>10.000</td><td>10.000 kg</td></tr> </tbody> </table> ----- 006 45.000 kg Max 10.000 kg Min 5.000 kg Diff 5.000 kg x 7.5000 kg Sd 2.7386 kg Srel 36.5147 % -----	Seq	Gross	Net	001	5.000	5.000 kg	002	5.000	5.000 kg	003	5.000	5.000 kg	004	10.000	10.000 kg	005	10.000	10.000 kg	006	10.000	10.000 kg	Name ASDFGHJKLQWERTYUIO Pcode 123456789012345678 Opr 0123 Mac 6666 MacGp 22 Date 2017-02-27 <table border="1"> <thead> <tr> <th>Seq</th> <th>Time</th> <th>Net</th> </tr> </thead> <tbody> <tr><td>001</td><td>14:00:17</td><td>4.999 kg</td></tr> <tr><td>002</td><td>14:00:20</td><td>4.999 kg</td></tr> <tr><td>003</td><td>14:00:23</td><td>4.999 kg</td></tr> <tr><td>004</td><td>14:00:27</td><td>4.999 kg</td></tr> <tr><td>005</td><td>14:00:30</td><td>4.999 kg</td></tr> <tr><td>006</td><td>14:00:33</td><td>4.999 kg</td></tr> </tbody> </table> ----- 006 Total 29.994 kg Max 4.999 kg Min 4.999 kg Diff 0.000 kg x 4.9990 kg Sd 0.0000 kg Srel 0.00000 % -----	Seq	Time	Net	001	14:00:17	4.999 kg	002	14:00:20	4.999 kg	003	14:00:23	4.999 kg	004	14:00:27	4.999 kg	005	14:00:30	4.999 kg	006	14:00:33	4.999 kg
Seq	Gross	Net																																										
001	5.000	5.000 kg																																										
002	5.000	5.000 kg																																										
003	5.000	5.000 kg																																										
004	10.000	10.000 kg																																										
005	10.000	10.000 kg																																										
006	10.000	10.000 kg																																										
Seq	Time	Net																																										
001	14:00:17	4.999 kg																																										
002	14:00:20	4.999 kg																																										
003	14:00:23	4.999 kg																																										
004	14:00:27	4.999 kg																																										
005	14:00:30	4.999 kg																																										
006	14:00:33	4.999 kg																																										

Printout Format #2

Printout Format #4
with Statistic Results Ouput

Printout Format #5
with Statistic Results Ouput

Versatility, Functionality and Accuracy are always Built-in

19eA Multi-Function Indicator

Connectivity

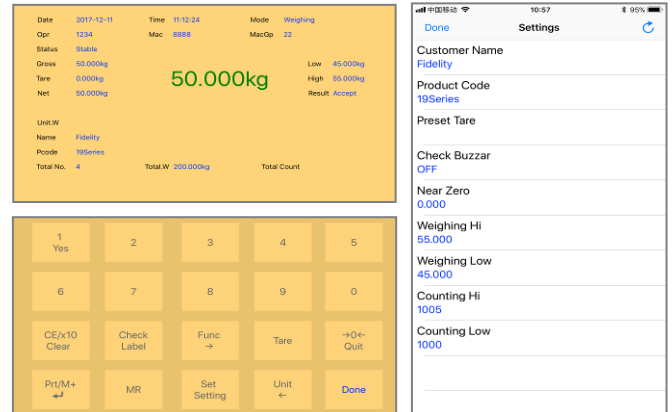
- 2 x Configurable Bi-Directional Serial Comports. Maximum Baud Rate = 256000
- Support Bar Code Scanner for Customer & Product Code Entries
- 9 x Selectable Fixed plus 1 x User Programmable PC Output Protocols
- Optional Built-in LAN Module for Ethernet and Internet Communication



Apps for Smart Phones & Devices

iOS App (i19) & Android App (a19) are available for free download at App Store and Google Play respectively. Both Apps support connection via Bluetooth and WIFI.

These Apps are so powerful that actually they turn your smart devices into a handheld terminal, remote display, remote data input center and controller.



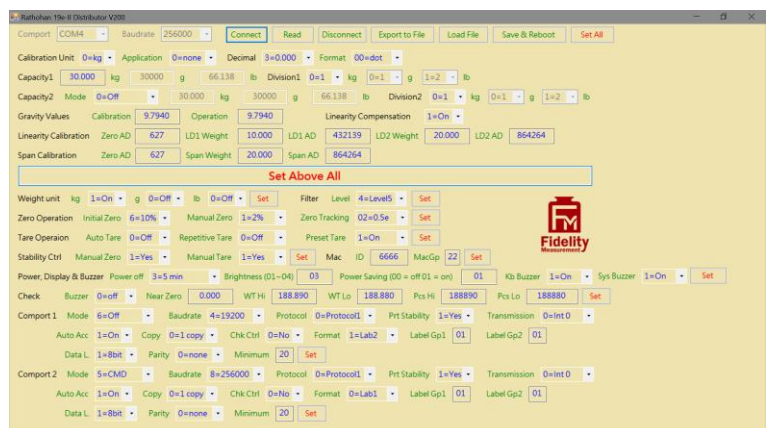
End User PC Software

- Freeware Specially Created to Support End Users
- Real Time Operation Status Monitoring
- Operation Parameters Setting
- Real Time Process Monitoring
- Individual and Totalized Record Storage
- Database File Output



Distributor only PC Software

- Freeware Specially Created to Support Distributors
- Extremely Useful for Heavy Capacity and Complex System Installation, Checking, Testing and Commissioning
- Real Time Important System Parameters Monitoring and Setting
- Export Current System Settings to External Backup File
- On Site or Remote System Recovery by External Backup File without Re-Calibration



Versatility, Functionality and Accuracy are always Built-in

19eA Multi-Function Indicator

Specifications

Capacity and Readability	Free Setting
Weighing Range	Single Range, Dual Range, Dual Interval
Weight Units	kg, g, lb
Display	<ul style="list-style-type: none"> 6 x 20mm LED Numeric Digits 5 x Adjustable Brightness Level
Load Cell Connection	<ul style="list-style-type: none"> Excitation Voltage = 5V DC Support both 4-wire & 6-wire Load Cells Maximum Load Cell Connection = 12 x 350Ω Load Cells or 24 x 700Ω Load Cells
Micro Processor	32-bit High Speed & High EMC Immunity
A/D Converter & Internal Resolution	<ul style="list-style-type: none"> 24 bit Low-Noise Delta to Sigma (Δ-Σ) 4,000,000 Counts at 20 mV Minimum input per d = 0.05μV
AD Conversion Speed	15, 30, 60, 120 times/second Selectable
Max. Tare Range	-Max or -Max ₁ (Subtractive Tare)
Calibration Methods	<ul style="list-style-type: none"> 2 Span Points Calibration (Linearity Calibration), or 1 Span Point Calibration, or Numeric Calibration Through Keyboard
Power Source	<ul style="list-style-type: none"> Built-in Rechargeable Battery = 6V, 4AH External Power Adaptor = DC 12V, 1A
Accessories	Pillar Mount Holder (φ35~38mm), Built-in Rechargeable Battery, Universal Power Adaptor, Dust Cover
Packing	<p>Individually Packed</p> <ul style="list-style-type: none"> Dimensions = 36 x 32 x 16cm. Net / Gross = 2.35 / 2.85kg <p>6 Units in Shipping Carton</p> <ul style="list-style-type: none"> Dimensions = 102 x 35 x 35cm. Net / Gross = 17.0/ 18.5kg
Operation Environment	-10 ~ 40°C. Non-condensed. R.H. ≤ 85%

In the interest of improvement, specifications may change prior to notice

Options

- Stainless Steel Wall/Desk Mount Holder
- SP-POS58IV & SP-POS88IV Thermal Ticket Printer
- Serial Bar Code Scanner
- WM Wireless Communication Module
- RD-DOT Dot Matrix Remote Display
- Built-in LAN Communication Module (Rechargeable Battery has to be Removed)



Fidelity Measurement Co., Ltd.
<http://www.fi-measurement.com>
 e-mail: info@fi-measurement.com

REV.: 19eA/21/01/05